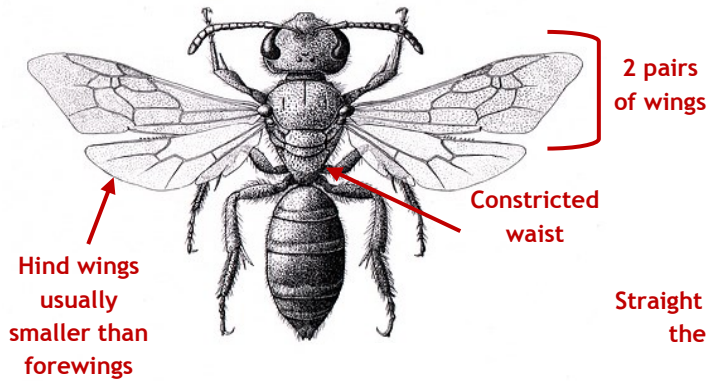


INSECT ORDERS

Hymenoptera

"Membrane Wing"

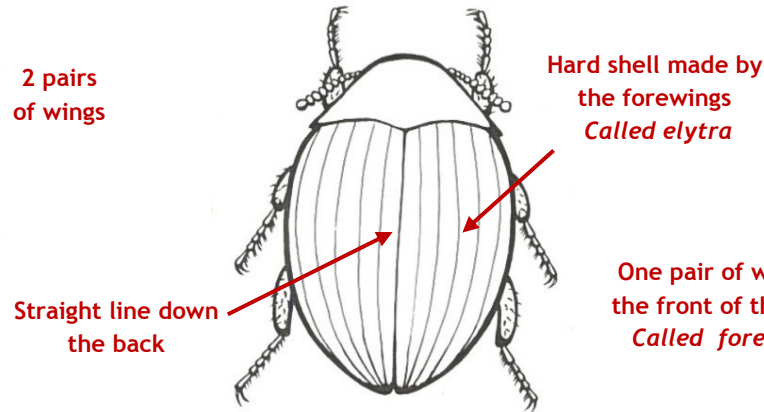
Ants / Wasps / Bees



Coleoptera

"Sheath Wing"

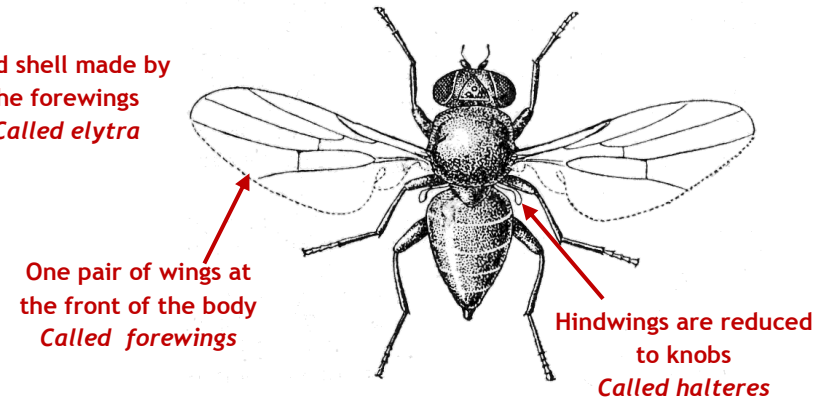
Beetles



Diptera

"Two Wings"

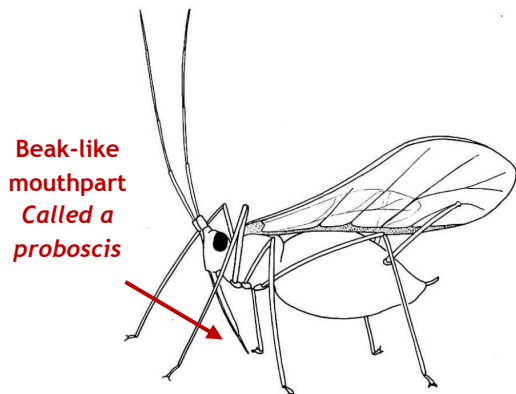
Flies/Mosquitoes/Gnats/Midges



Hemiptera

"Different Wings"

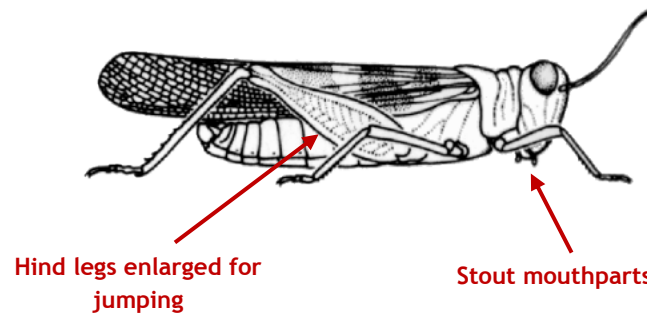
Leaf or Treehoppers/Aphids/Scale Insects



Orthoptera

"Straight Wings"

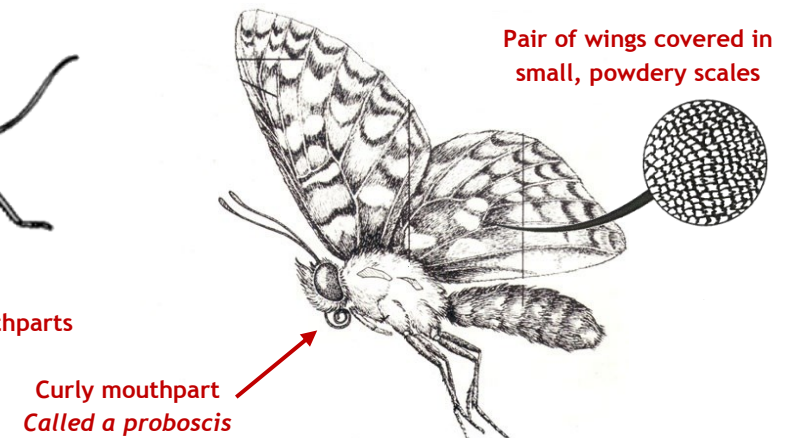
Grasshoppers/Crickets/Katydid



Lepidoptera

"Scaly Wings"

Butterflies/Moths

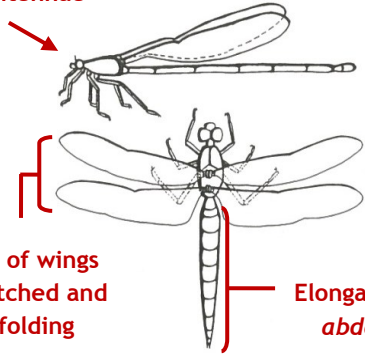


Odonata

"Toothed"

Dragonflies/Damselflies

Short antennae



2 pairs of wings
outstretched and
non-folding

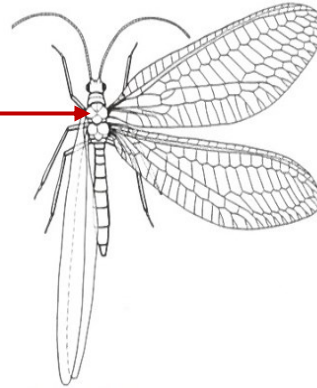
Elongate body
abdomen

Neuroptera

"Nerve Wing"

Lacewings

Wings more narrow
at the base

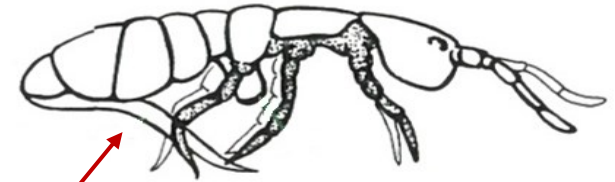


Two pairs
of wings
that look
lacy/
intricate

Collembola

"Glue Wedge"

Springtails



Forked tail tucked under body
Called a furcula

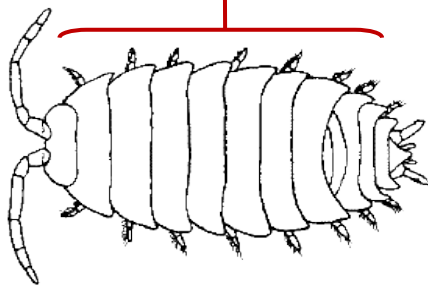
NON-INSECT ORDERS

Isopoda

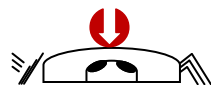
"Same Foot"

Roly Polies/Pill Bugs/Sow Bugs

Many body segments,
each has a pair of legs



Dorsoventrally Flattened
Looks like it was squeezed

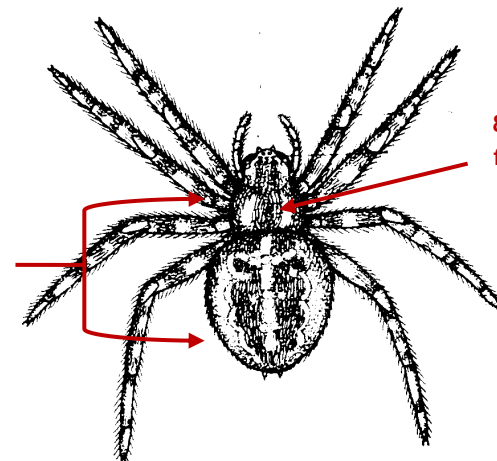


Arachnids

"Spider"

Spiders and Mites

2 body
segments



8 legs coming from
first body segment
cephalothorax